



SIAMRAJ PUBLIC COMPANY LIMITED

COMPANY PROFILE : SIAMRAJ PUBLIC COMPANY LIMITED

Company Name SIAMRAJ PUBLIC COMPANY LIMITED

Address 289/9 Moo 10, Old Railway Road, Samrong
Phrapradaeng, Samutprakarn 10130, Thailand

Tel 66 (0) 2743 5010-25

Fax 66 (0) 2743 0007-8

E-mail pump.jp@siamrajathanee.co.th

Website <http://www.siamrajpump.com>

Year Established 1984

Paid Up Capital Baht 50 Million

Bankers United Overseas Bank(Thai)PLC, Bangkok Bank

Key Personnel President/Managing Director Kiat Vimolchaloa
Division Manager Warawut Walsaleo
Product & Marketing Manager Nussara Boonprasert (Ms)

Nature of Business We are engineered pump company. Exclusive distributor of process worldwide pumps. We can service you by use our 30th years experience. We are pump specialist.

Our Key Customers

PTT GROUPS OIL and Petrochemical
SCG GROUPS Chemicals Paper and Cement
IRPC

OUR PRODUCTS: SELF-PRIMING, SOLIDS HANDLING, TRASH PUMPS

WEMCO®

Pumps & Systems

Rugged & Dependable Self-Priming, Solids Handling, Trash Pumps

- Available size 3" to 10"
- Head up to : 39 M
- Flow up to : 725 m3/hr
- Solids size up to : 3 inch
- Material : Cast Steel, High Chrome or CD4MCu Impeller
- Stainless Steel 17-4PH Shaft

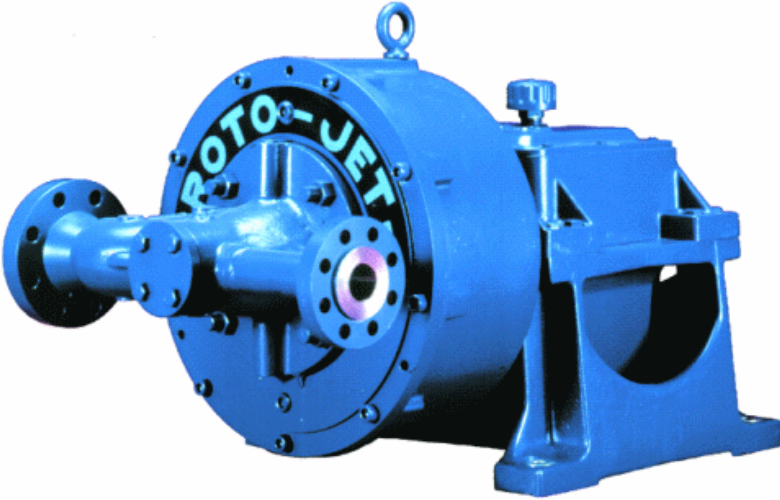


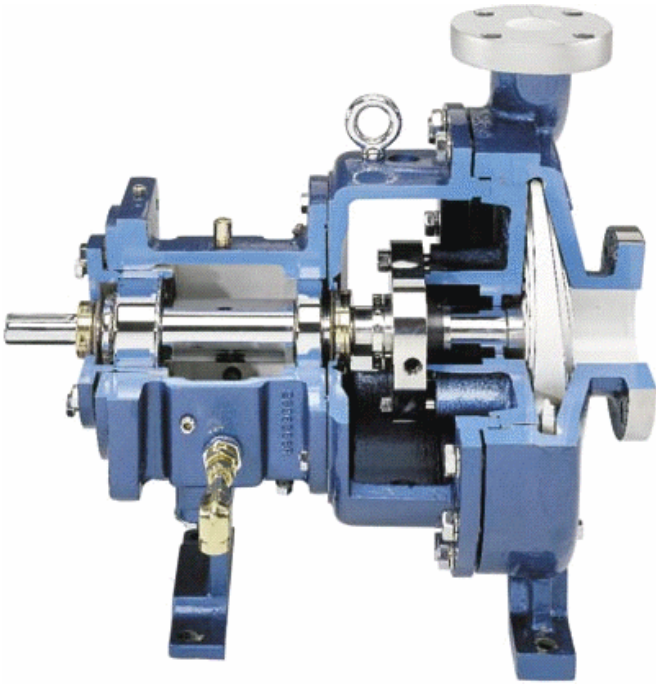
ROTO-JET®

High Pressure Pitot Tube Pumps

Model RO® Pump (API available)

- Capacity: to 450 gpm (109 m/hr)
- Heads: to 5200 ft. (1585 m)
- Pressures: to 2250 psi (155 Bar)
- Temperatures: to 550 oF (288 oC)
- Maximum Speed: 6321 RPM





Heavy Duty Process Pump (ANSI B73.1 STD)

- Capacities: Up to 4500 gpm (1022 m3/hr)
- Head: Up to 730 feet (222 meters)
- Pressure: Up to 375 psi (2586 kPa)
- Horsepower: Up to 300 hp (224 kW)
- Temperature: Up to 500 oF (to 260oC)
- Drives: Motors, engines, steam turbine
- Liquids: Chemical, pulp and paper, all process
- Materials: Ductile Iron, 316SS, CD4MCu, 317SS, Nickel, Alloy 20, Hastelloys, Zirconium, Titanium



- Maximum total head (m): 80
- Maximum Capacity (l/m): 1100
- Maximum operating temp. (oC): 280
- Maximum viscosity (cP): 300
- Maximum SG : 2.0
- Flange standard : ASME150LB RF, JIS 10K RF
- Pump material : SCS13 (SUS304), SCS14 (SUS316), Alloy 20

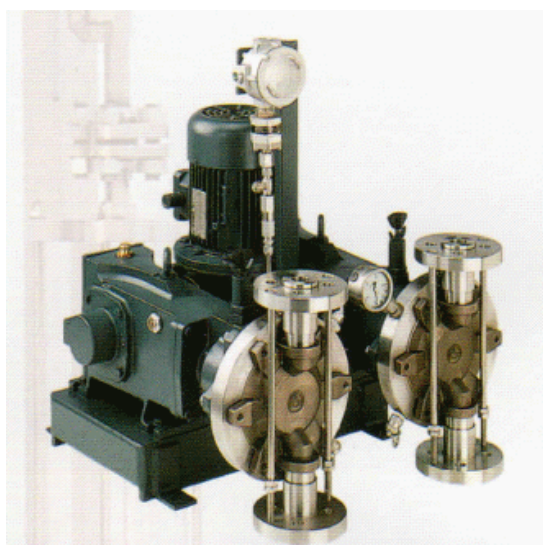
Large size standard centrifugal magnet drive pump



METERING PUMP

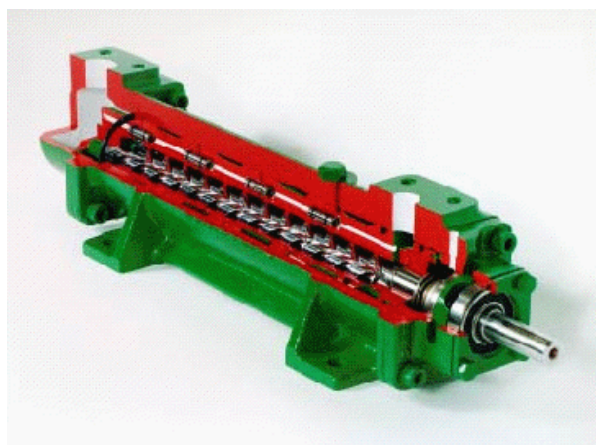
API Metering Pump

- Reciprocating plunger and diaphragm process pump.
- Designed to solve with the highest reliability and precision any problem associated with metering applications single acting for all models, double acting for piston type pumping head only
- Piston Pump with heating jacket.



IMO US POSITIVE DISPLACEMENT 3- SCRE PUMP

- Flow rates up to 795 m³/h
- Typical pump discharge pressure to 345 bar
- Temperature up to 260 degree C
- Fluid viscosity from 1.6 to 5,400 cSt



KANSAI
Automation

"Technology First" orientation and environmental protection



PaDDLE



MICROWAVE

Measuring for Life

LEVEL METER



FLOAT

FLQaT



capacitance

pompetravaini



TRAVALNI Liquid ring Vacuum pump,

:TRH-TRS Model Standard

: TRMB Mono block

: TRVX Liquid ring Vacuum pump (New Model)

: Hydrosys Vacuum Skids

Flow rate : up to 3500 m3/Hr

Max Vacuum : 33 mBar



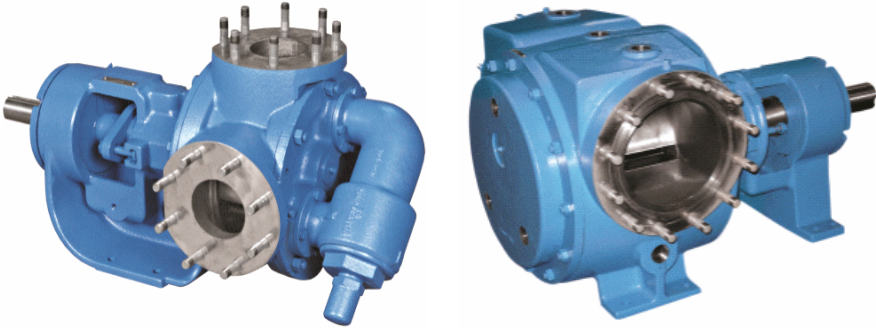
SANDPIPER®
A WARREN RUPP, INC. BRAND

**VIKING
PUMP**

VIKING® - GLOBAL LEADER IN POSITIVE DISPLACEMENT PUMP -USA.

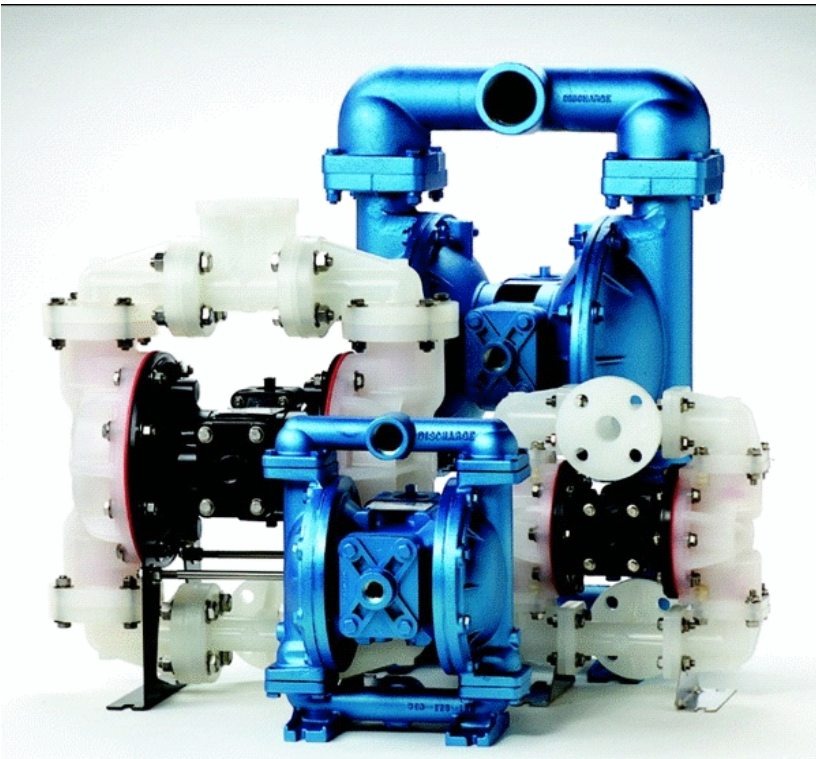
- Strong knowledge with over 100 years of expertise

- With 4 leaders in PD pump technologies – Internal Gear, External Gear, Rotary Vane and Industrial lobe
- Size available from ¼" to 10" that can handle max. capacity up to 365m³/hr (1600GPM)
- Capable of handling viscosity from 28 to 2,000,000 SSU (1 to 440 cSt)
- Reliability, Quality, Performance and Simple maintenance

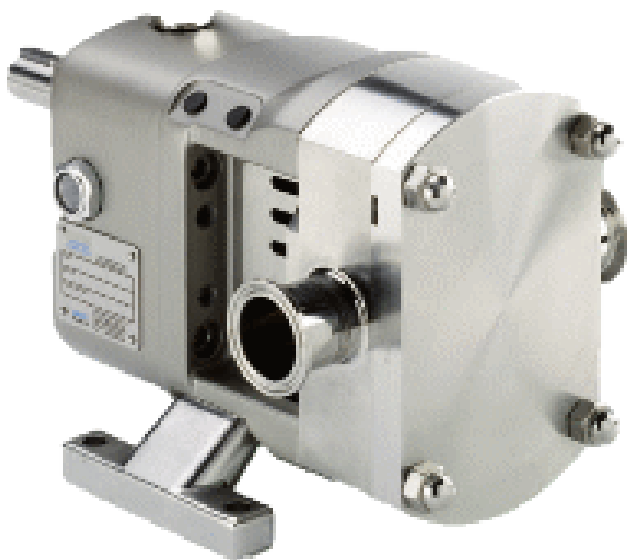


SANDPIPER® - AIR OPERATED DOUBLE DIAPHRAGM PUMP –USA

- Sealless, Self-priming pump and can run dry without damage
- With signature pump configurations, our pumps can handle solids up to 3" line size
- Size available from ¼" to 3" with variable pump material and elastomers
- ESADS+Plus® - In-line serviceable air valve system
- Bolted construction, Safe, Reliable and Easy maintenance



wright flow
TECHNOLOGIES



SANITARY LOBE PUMP/CIRCUNFERENTIAL PISTON PUMP/CENTRIFUGAL PUMP

Ideally suited for a variety of hygienic processes

- Standard 0.8um Ra finish
- Enhanced surface finishes available
- Hygienically designed
- Tri-lobe or Multi-lobe rotors
- Low shear
- Pressure relief valves available for front cover
- 316L & Non Galling Alloy product wetted parts
- 3A, EHEDG, FDA & ATEX options available
- De-mountable Rotor case
- Universal mounting
- Oil lubrication
- Heating & Cooling jackets available for front cover & rotor case



.....