



TOYODA GOSEI (THAILAND) CO., LTD.

We are contributing to safety, comfort, and environment with polymer technology.

HOME : TOYODA GOSEI (THAILAND) CO., LTD.

Business Units

Each of Toyota Gosei's business units is working to earn a leading market share in selected products. Those efforts center on (1) developing and offering high-value-added products; (2) adhering to manufacturing practices rigorously consistent with the fundamentals of making things well and working continuously to upgrade production processes; and (3) build and continuously strengthen a globally optimized supply network.

Interior and Exterior Parts

- Instrument Panel Modules and Components
- Interior Parts
- Exterior Parts
- Car Accessories



Cockpit modules



Radiator grilles

Functional Parts

- Fuel Tank Module Components
- Power Train Parts
- Chassis and Drive Train Parts



Plastic fuel filler pipes



Brake hoses

Automotive Sealing Products

- Door Glass Run
- Door Weatherstrip
- Opening Trim Weatherstrip
- Luggage Weatherstrip



Luggage Weatherstrip



Door Glass Run

Safety System Products

- Airbags
- Steering Wheels



Airbags



Steering Wheel



TOYODA GOSEI (THAILAND) CO., LTD.

We are contributing to safety, comfort, and environment with polymer technology.

INTERIOR & EXTERIOR PARTS : TOYODA GOSEI (THAILAND) CO., LTD.

Interior and Exterior Parts



Interior parts producing comfortable indoor space such as instrument panels, console boxes, etc., and exterior parts widely affecting design of cars such as radiator grilles, backdoor garnishes, etc. Each of them easily reaches people's eyes and therefore it should be excellent in design and quality.

We have recently mass-produced genuine leather instrument panels for luxury sports cars. We have been further enhancing our capacity for supply and competitiveness with its global system of 12 overseas production bases (UK plant to be added in 2011). Taking the advantage of in-house development and manufacturing of LEDs, we work on development and mass production of in-vehicle LED products and focus on offering and expanding LED lighting for residential use with its know-how.

Instrument Panel Modules and Components



Center Clusters



Panel S/A Instr CTR Finish



Console Boxes



Register Assy Instrument



Interior Parts

Intrument panel-upper



Duct Air



Glove Compartment



Cover Speaker



Door Panel Armrest



Panel Box



Panel Box



Panel Console UPR



Exterior Parts

Cowl Top Panel



Radiator grilles



Wheel Center Caps



Skid Plate Garnish





TOYODA GOSEI (THAILAND) CO., LTD.

We are contributing to safety, comfort, and environment with polymer technology.

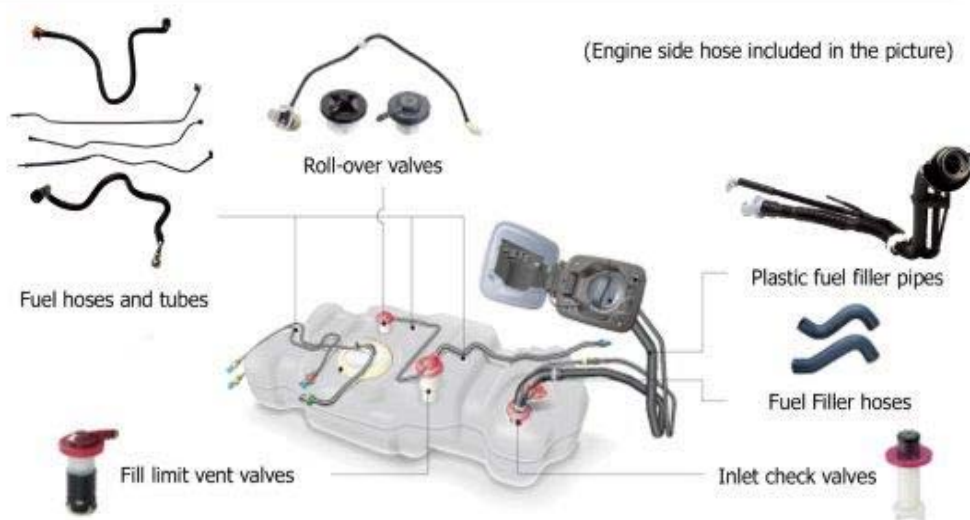
FUNCTIONAL PARTS : TOYODA GOSEI (THAILAND) CO., LTD.

Functional Parts

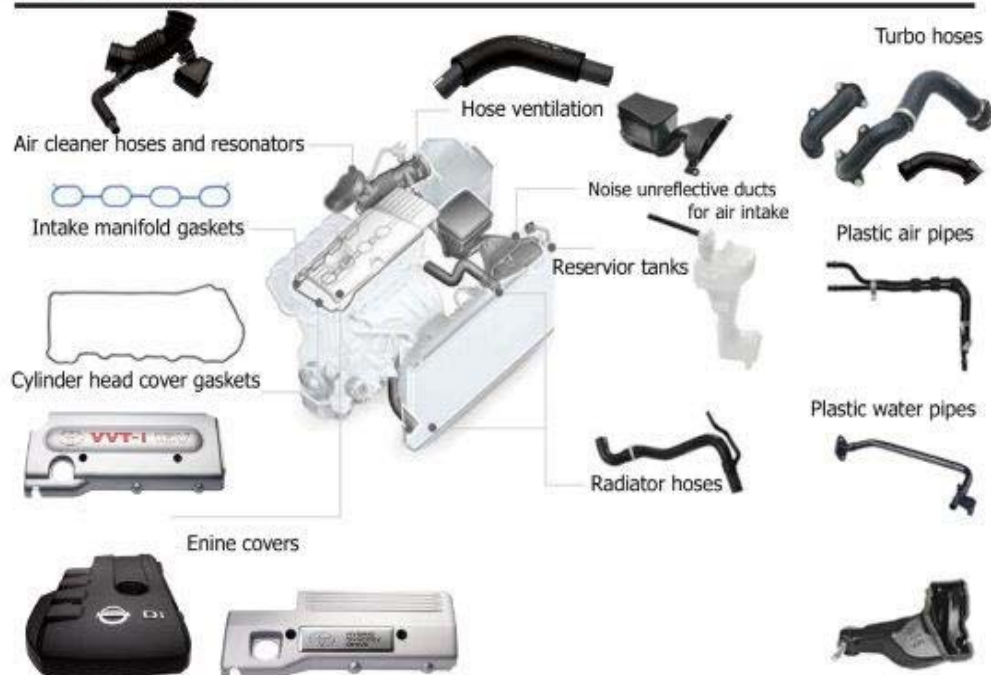


We offer parts supporting basic performance of cars such as "run", "stop", "turn", etc. e.g. fuel parts, brake hose, etc. With its high performance and high quality highly acclaimed, Toyoda Gosei including its 9 overseas production bases supplies products globally, securing the world top market share. In 2010, the company started the mass production of more advanced version of a resin fuel filler pipe for which the company succeeded in the mass production for the first time in Japan in 2008, contributing to the mass production of a version allowing lower cost and high functionality. We will further challenge manufacturing products meeting the needs in the environmental era, striving for lighter and more compact products

Fuel Tank Modules Components



Power Train Parts



Chassis and Drive Train Parts





TOYODA GOSEI (THAILAND) CO., LTD.

We are contributing to safety, comfort, and environment with polymer technology.

AUTOMOTIVE SEALING PRODUCT : TOYODA GOSEI (THAILAND) CO., LTD.

Automotive Sealing Product



Automotive Sealing products with various function: not only protecting inner space from rain, wind and noise but also making movement of doors and glass-windows smooth and improving the sound of door closure, etc. Those products include door weatherstrip to be fit into door frames according to various door shapes, glass-run for window frames, open trim weatherstrip for body frames and others, and have the world largest share in the market. We enhance our capacity for product planning and production technology and offer proactive proposals to car makers through our global supply from 13 overseas production bases and its consistent manufacturing processes ranging from material development, own process of "mixing" materials, product development and design, preparation for mass production, to forming and processing are our strengths. We further seek weight saving and development of recycling.



Hidden door



Frame door



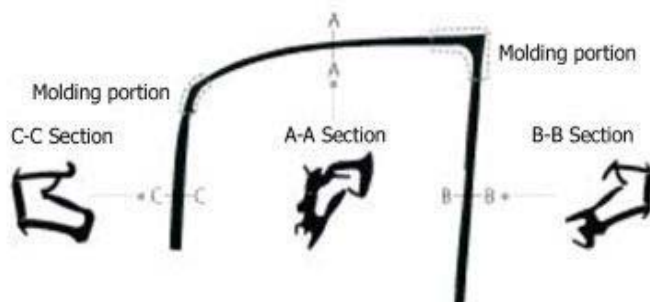
Frameless door



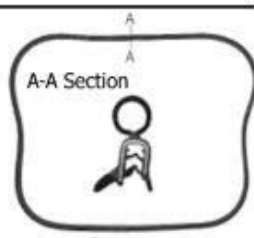
Stamped door



Door Glass Run



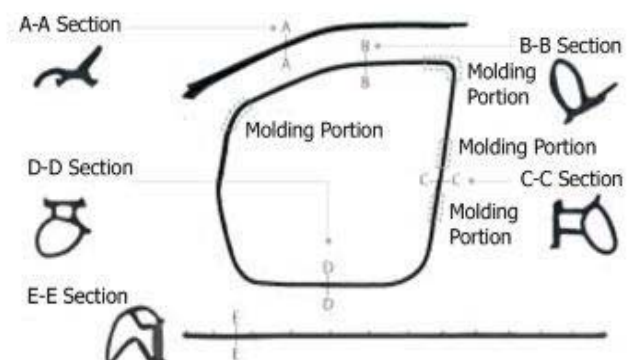
Luggage Weatherstrip



Opening Trim Weatherstrip



Opening Trim Weatherstrip





TOYODA GOSEI (THAILAND) CO., LTD.

We are contributing to safety, comfort, and environment with polymer technology.

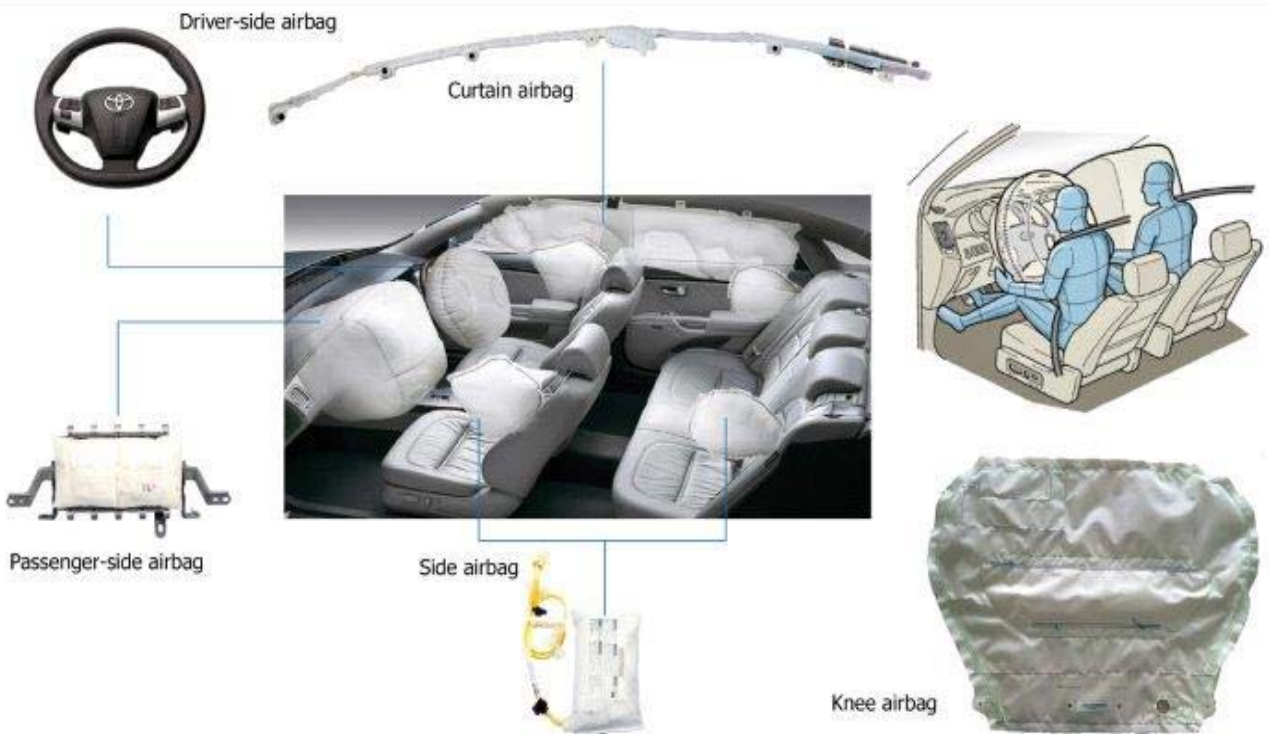
SAFETY SYSTEM PRODUCTS : TOYODA GOSEI (THAILAND) CO., LTD.

Safety System Products



We started mass production of airbag for driving seat in 1989. After that, we have developed continuously passenger side airbag, side airbag and curtain airbag to protect passenger from side-impact collisions, knee airbag to protect passenger's legs, rear-impact airbag to protect the head of a passenger in a rear seat, rear-seat center airbag to reduce the impact of collisions between passengers, etc. We are currently developing 360° full-cover airbag to protect against every angle of collision on a global basis in 5 domestic production bases and 14 overseas production base. As future focus point, we are actively working on the development of technology to meet the needs of emerging markets and the development of combined technology with preventive safety, pre-crash system to avoid collisions toward zero fatal accident, e.g. airbag to protect pedestrians, etc.

Airbags



Steering Wheels





TOYODA GOSEI (THAILAND) CO., LTD.
We are contributing to safety, comfort, and environment with polymer technology.

COMPANY PROFILE : TOYODA GOSEI (THAILAND) CO., LTD.

Company Name	TOYODA GOSEI (THAILAND) CO., LTD.
Address	HEAD OFFICE & FACTORY 2 700/489 Moo 4 Amata Nakorn Industrial Estate Bangna-Trad Highway Km. 57 Tambon Ban-Kao Amphur Phantong, Chonburi 20160, Thailand FACTORY 1 700/127 Moo 5 Amata Nakorn Industrial Estate Bangna-Trad Highway Km. 57 North Klongtamru, Amphur Muang Chonburi 20000, Thailand Tel: 66 (0) 3821 3261-4 Fax: 66 (0) 3821 3265 FACTORY 3 700/671 Moo 7 Amata Nakorn Industrial Estate Bangna-Trad Highway Km. 57 Tambon Donhuarrow, Amphur Muang Chonburi 20000, Thailand Tel: 66 (0) 3804 7108-9 Fax: 66 (0) 3804 7026
Tel	66 (0) 3845 4089-94
Fax	66 (0) 3845 4095
Year Established	1994
Paid Up Capital	Baht 400 Million
Staff Strength	2503 (as of Jan 15)
Key Personnel	President Koichi Ogiso Executive Vice President Kenji Sugiyama
Nature of Business	Manufacturer & Exporter of Automotive Parts: - Steering Wheel - Air Bags - Brake Hose - Interior & Exterior Plastic parts.
Quality Standards	ISO/TS 16949, ISO 14001, OHSAS 18001
Main Shareholders/Parent Company	Toyoda Gosei Co., Ltd. (Japan)